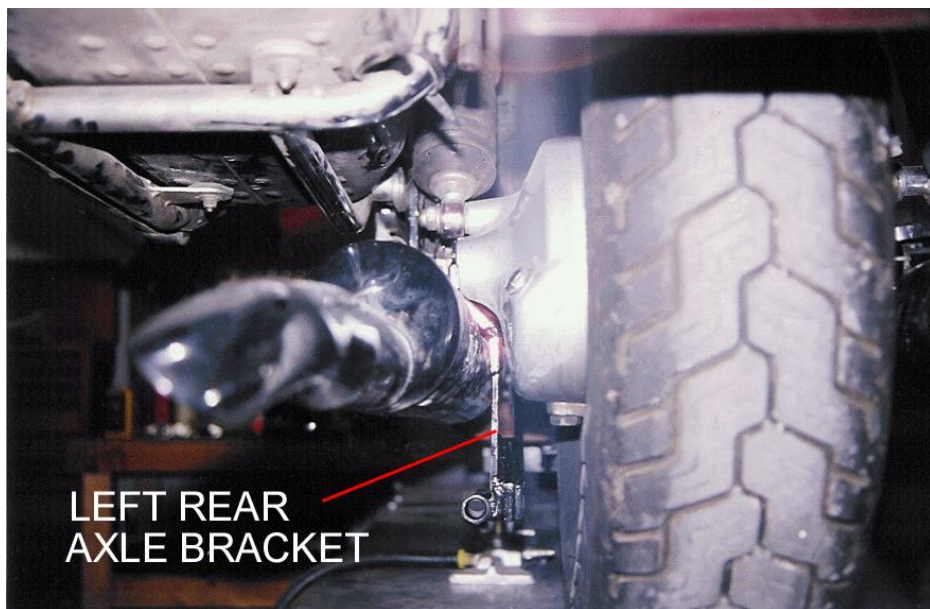
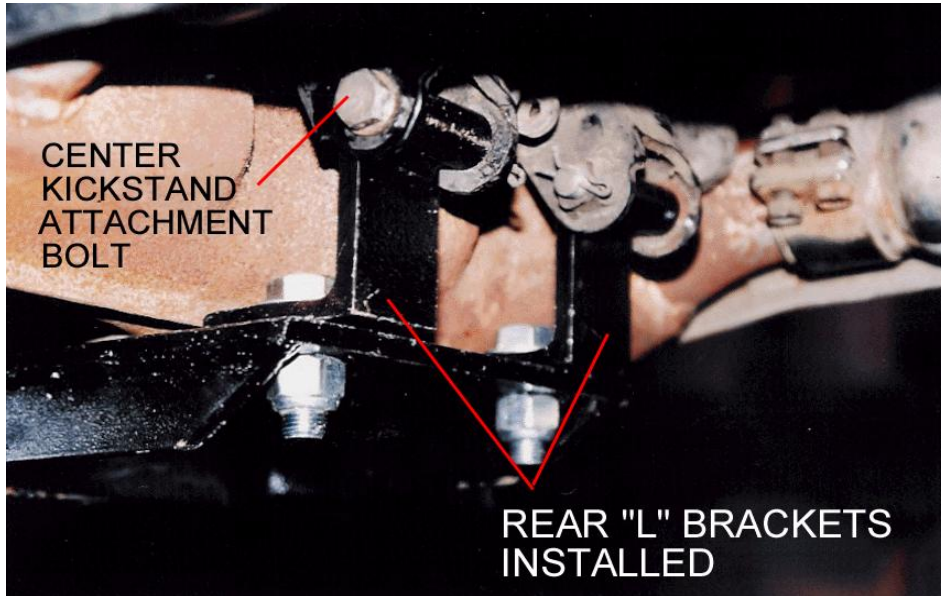
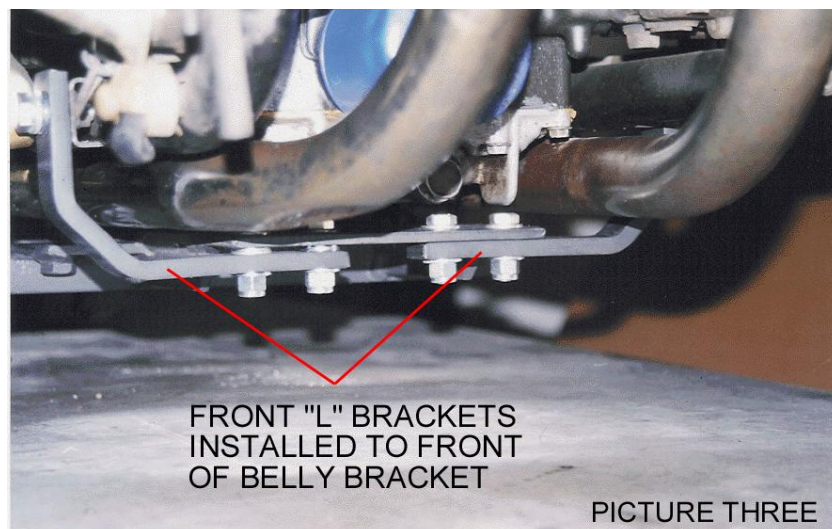
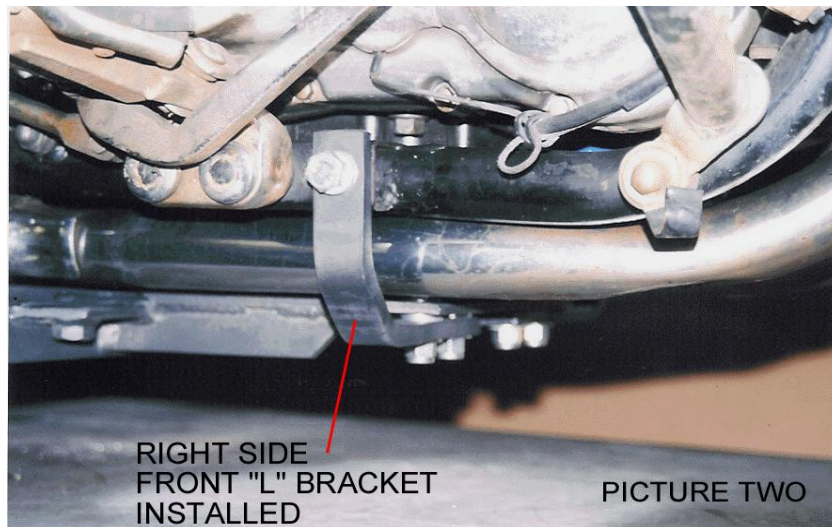
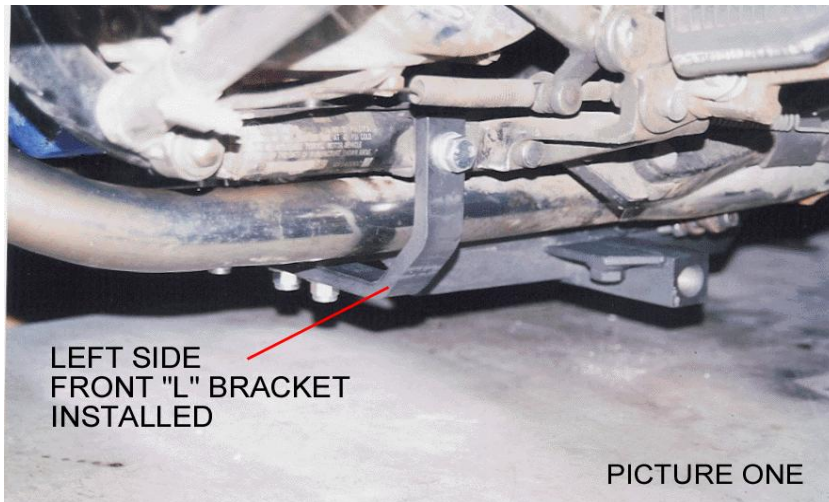


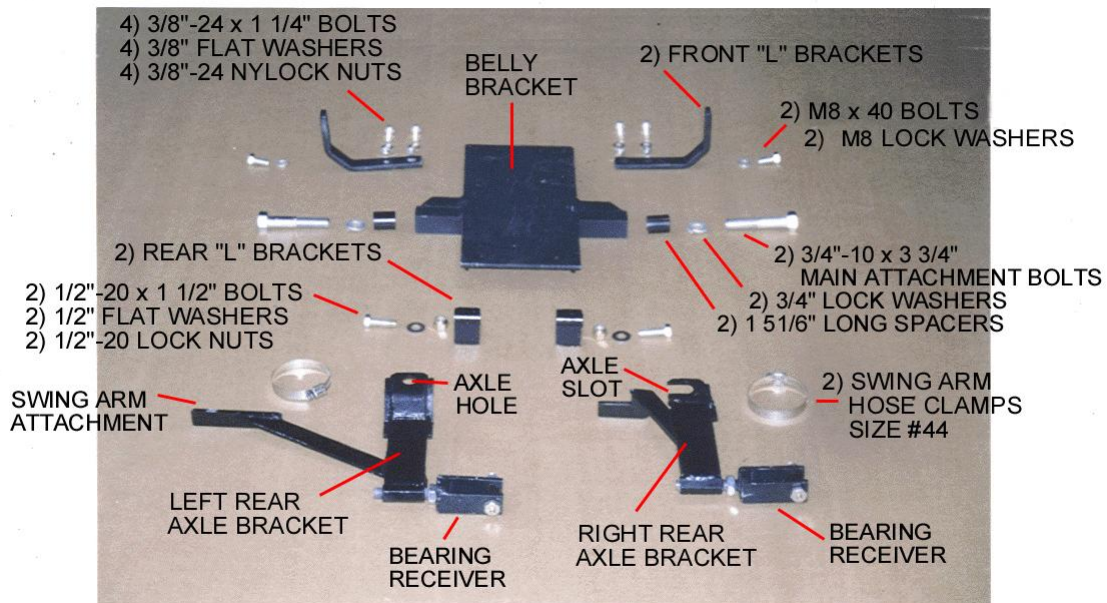
SUZUKI CAVALCADE 1400
REAR "L" BRACKETS INSTALLED
LEFT REAR AXLE BRACKET INSTALLED



SUZUKI CAVALCADE 1400 FRONT "L" BRACKETS INSTALLED



SUZUKI CAVALCADE 1400 DESCRIPTION OF PARTS



Three 3/8" washers used as shims– not shown in picture above.
You may or may not have to use the shims. See note below.

After installing the mounting hardware and attaching the Voyager frame to the belly bracket you may need shims to make the motorcycle stand straight up and down.

The shims may be used on either the left or the right side depending on which way the motorcycle is leaning. If the motorcycle is leaning to the left put the shims on the left side. If the motorcycle is leaning to the right put the shims on the right side. The shims will go on the front and back of one side of the belly bracket.

Place shims in-between belly bracket and front "L" bracket;

Place shim in-between belly bracket and rear "L" bracket.

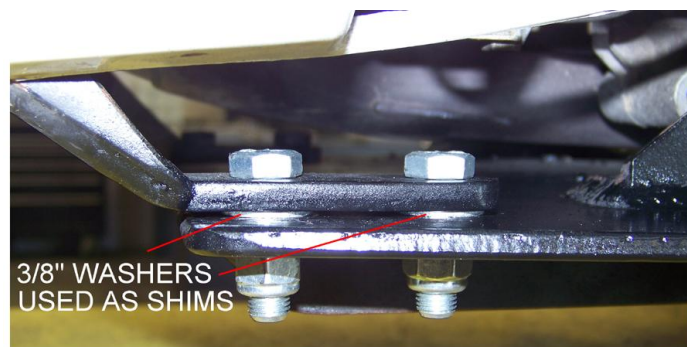


ILLUSTRATION OF SHIM PLACEMENT
BRACKET PICTURED MAY NOT MATCH YOUR BRACKET

SECTION 1

SUZUKI CAVALCADE 1400

MOUNTING HARDWARE

Place motorcycle on a clean flat surface. Make sure to tie down motorcycle on both sides, so that motorcycle can not tip over while installing hardware. Installation is easier if motorcycle is in an upright position.

Disconnect negative cable from battery before beginning installation.

NOTE: The Voyager Convertible Kit was designed for a stock motorcycle from the manufacturer. Any after market products that are on a stock motorcycle may cause the installation process to not be done properly and may or may not need to be removed to be able to install the Voyager Convertible Kit completely. Be aware that your motorcycle and the same make & model as someone else's motorcycle may not have mufflers, body panels, frames, fenders and any other manufacturer parts that are attached to the motorcycle in the exact same place as yours. We at Motorcycle Tour Conversion, Inc. take that into consideration when we manufacture our parts to fit your motorcycle. Once in awhile you may need to modify your motorcycle slightly so that the Motorcycle Tour Conversion, Inc. hardware or suspension fits your motorcycle. Please call Motorcycle Tour Conversion, Inc. if you have any questions about installation with after market products or any modification of motorcycle and/or Motorcycle Tour Conversion, Inc. hardware.

A) BELLY BRACKET

- 1) Remove center kickstand of motorcycle. Attach rear "L" brackets to rear of belly bracket. Insert rear "L" brackets into center kickstand area. Install kickstand bolts of motorcycle back into place. Tighten all bolts at this time and replace lock pins of center kickstand bolts.
- 2) Attach belly bracket to the top of the front "L" brackets with (4) 3/8"-24 x 1 1/4" bolts, 3/8" flat washers, and 3/8"-24 nylock nuts. (as shown in picture three)
- 3) Swing the belly bracket and "L" brackets up to the extra front foot peg bolt hole on each side using (2) M8 x 40 bolts, and (2) M8 lock washers provided with kit. (as shown in pictures one & two)

SECTION 1

SUZUKI CAVALCADE 1400

MOUNTING HARDWARE

B) TWO (2) REAR AXLE BRACKETS

- 1) Remove axle nut at this time. Tap axle out a 1/4" in. Slide right rear axle bracket over axle. Make sure that the swing arm attachment and swing arm of motorcycle are touching. Rap swing arm hose clamp over swing arm attachment and swing arm of motorcycle. Tighten at this time.
- 2) Place left rear axle bracket over axle. Make sure that swing arm attachment and swing arm of motorcycle are touching. Install swing arm hose clamp the same way as right side. Replace axle nut and tighten at this time.



MOTORCYCLE TOUR CONVERSION, INC.
1530 TITANIUM DR
OTTAWA, IL. 61350

TOLL FREE: 877-434-7901
FAX: 815-434-8980

SUZUKI CAVALCADE 1400

INSTALLATION MANUAL
US PATENT # 6,739,420

**WARRANTY WILL BE VOID IF INSTALLATION
IS NOT DONE PROPERLY**

**READ THIS MANUAL FULLY BEFORE
BEGINNING INSTALLATION OR DRIVING YOUR
MOTORCYCLE WITH THE VOYAGER KIT ATTACHED**