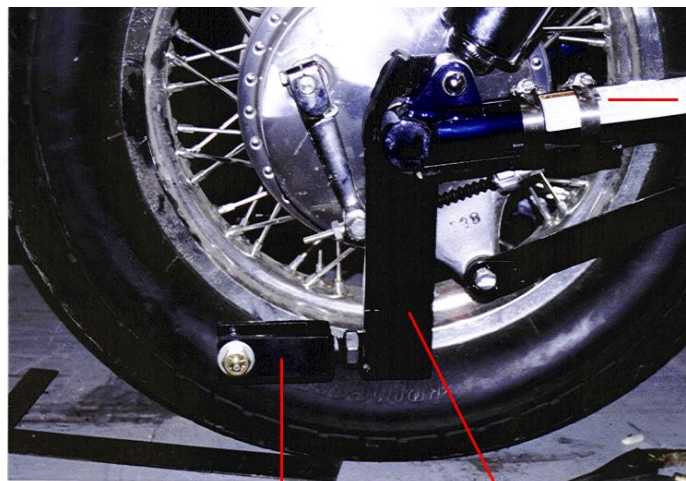


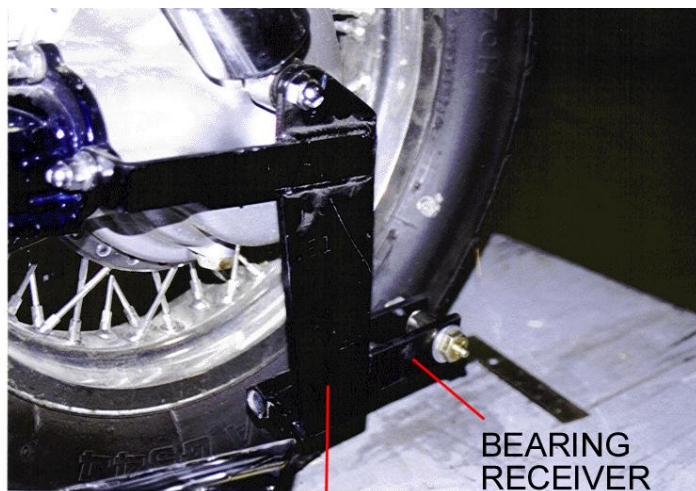
# SUZUKI INTRUDER 1400 & BOULEVARD S83 REAR AXLE BRACKETS INSTALLED



SWING ARM  
HOSE CLAMP  
(ONLY ONE  
IS NEEDED)

BEARING  
RECEIVER

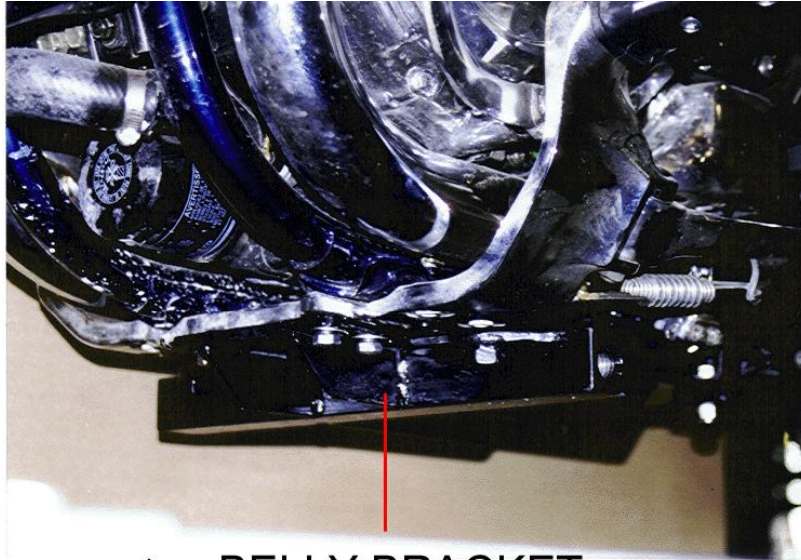
RIGHT REAR  
AXLE BRACKET



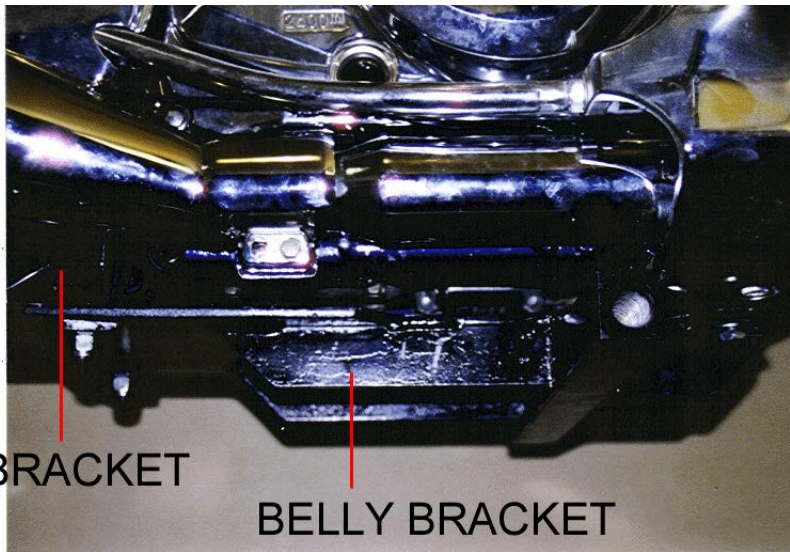
BEARING  
RECEIVER

LEFT REAR  
AXLE BRACKET

# SUZUKI INTRUDER 1400 & BOULEVARD S83 BELLY BRACKET INSTALLED



BELLY BRACKET

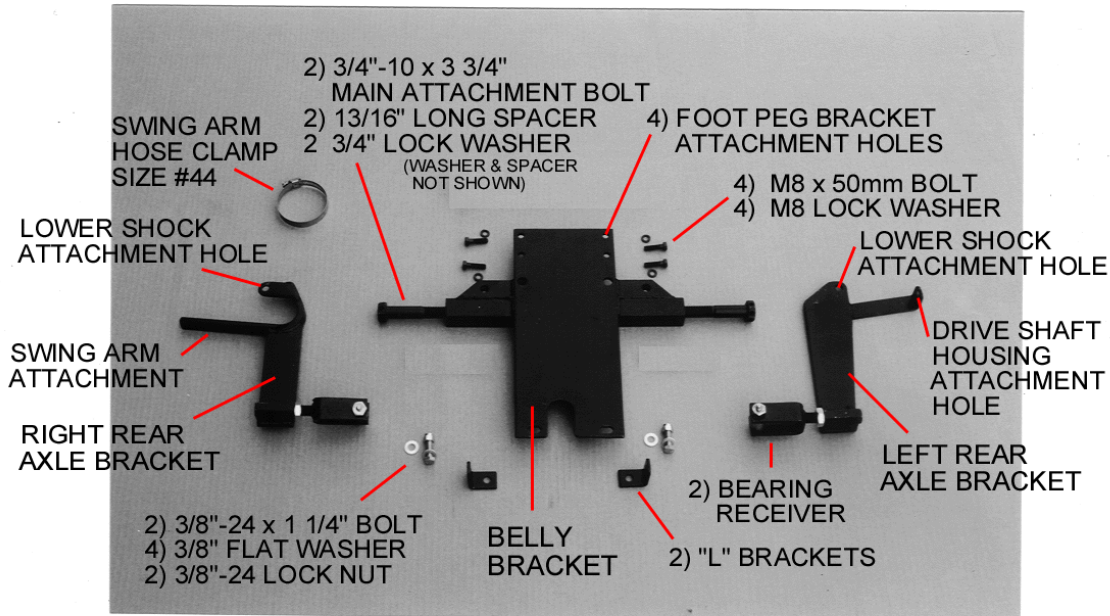


"L" BRACKET

BELLY BRACKET

# SUZUKI INTRUDER 1400 & BOULEVARD S83

## DESCRIPTION OF PARTS



Three 3/8" washers used as shims– not shown in picture above.  
 You may or may not have to use the shims. See note below.

After installing the mounting hardware and attaching the Voyager frame to the belly bracket you may need shims to make the motorcycle stand straight up and down. The shims may be used on either the left or the right side depending on which way the motorcycle is leaning. If the motorcycle is leaning to the left put the shims on the left side. If the motorcycle is leaning to the right put the shims on the right side. The shims will go on the front and back of one side of the belly bracket.

**Place shims on top of foot peg bracket holes;**

**Place shim in-between belly bracket and "L" bracket.**

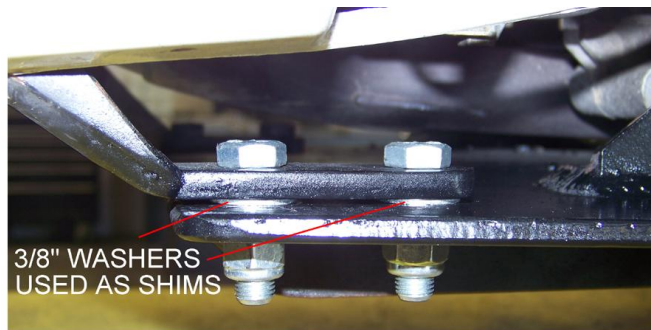


ILLUSTRATION OF SHIM PLACEMENT  
 BRACKET PICTURED MAY NOT MATCH YOUR BRACKET



# SECTION 1

## INSTALLATION OF

### SUZUKI INTRUDER 1400 & BOULEVARD S83

### MOUNTING HARDWARE

Place motorcycle on clean flat surface. Tie motorcycle down on both sides, so that motorcycle can not tip over. Lay out all hardware. Installation is easier if motorcycle is in an upright position.

**Disconnect negative cable from battery before beginning installation.**

**NOTE:** The Voyager Convertible Kit was designed for a stock motorcycle from the manufacturer. Any after market products that are on a stock motorcycle may cause the installation process to not be done properly and may or may not need to be removed to be able to install the Voyager Convertible Kit completely. Be aware that your motorcycle and the same make & model as someone else's motorcycle may not have mufflers, body panels, frames, fenders and any other manufacturer parts that are attached to the motorcycle in the exact same place as yours. We at Motorcycle Tour Conversion, Inc. take that into consideration when we manufacture our parts to fit your motorcycle. Once in awhile you may need to modify your motorcycle slightly so that the Motorcycle Tour Conversion, Inc. hardware or suspension fits your motorcycle. Please call Motorcycle Tour Conversion, Inc. if you have any questions about installation with after market products or any modification of motorcycle and/or Motorcycle Tour Conversion, Inc. hardware.

#### A) Rear Axle Brackets

- 1) **Left Side:** Remove the retaining nut from the lower shock attachment and the outside nut from the drive shaft housing. Install left rear axle bracket to the drive shaft housing bolt, then through the slotted hole for the lower shock bolt. Replace and tighten nuts.
- 2) **Right Side:** Remove the retaining nut from the lower shock attachment. Install right rear axle bracket and replace nut. Attach swing arm attachment to swing arm and use swing arm hose clamp to tighten together. Replace and tighten shock nut.

**SECTION 1**  
**INSTALLATION OF**  
**SUZUKI INTRUDER 1400 & BOULEVARD S83**  
**MOUNTING HARDWARE**

**B) Belly Bracket**

- 1) Locate the four bolts under the front of the motorcycle on the foot peg bracket, remove these bolts ( 2 on each side). Next locate the corresponding holes on the front of the belly bracket and attach belly bracket with the 4 bolts provided to the foot peg brackets of motorcycle. (Do Not tighten at this time.)
- 2) Attach the 2 “L” brackets (rounded edges up) to the rear of the belly bracket with bolts provided and attach the 2 pivot points on the lower frame of the motorcycle where the battery support bracket meet the frame of the bike with the existing bolts. (“L” brackets are placed on top of the belly bracket.)
- 3) Tighten all bolts at this time.
- 4) To align the Voyager frame with motorcycle you will have to go to Section 2 Installation of jack stands, frame and dual shock suspension Part C Frame and Rear Suspension number 7 Ease of Installation. You may have to loosen bolts on belly bracket to adjust alignment of Voyager frame.



MOTORCYCLE TOUR CONVERSION, INC.  
1530 TITANIUM DR  
OTTAWA, IL. 61350

TOLL FREE: 877-434-7901  
FAX: 815-434-8980

## **SUZUKI INTRUDER 1400 & BOULEVARD S83**

INSTALLATION MANUAL  
US PATENT # 6,739,420

**WARRANTY WILL BE VOID IF INSTALLATION  
IS NOT DONE PROPERLY**

**READ THIS MANUAL FULLY BEFORE  
BEGINNING INSTALLATION OR DRIVING YOUR  
MOTORCYCLE WITH THE VOYAGER KIT ATTACHED**