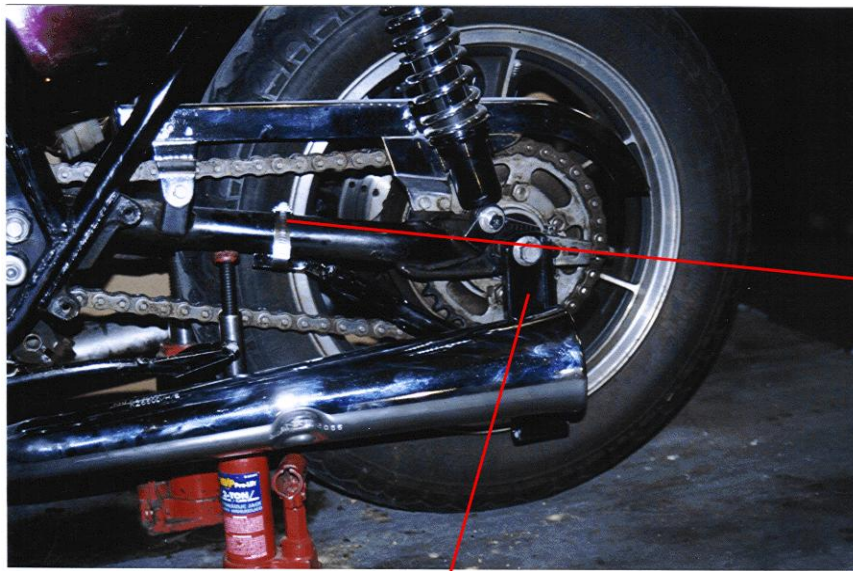


KAWASAKI KZ 750 LTD REAR AXLE BRACKETS INSTALLED



Axle nut &
Cotter Pin

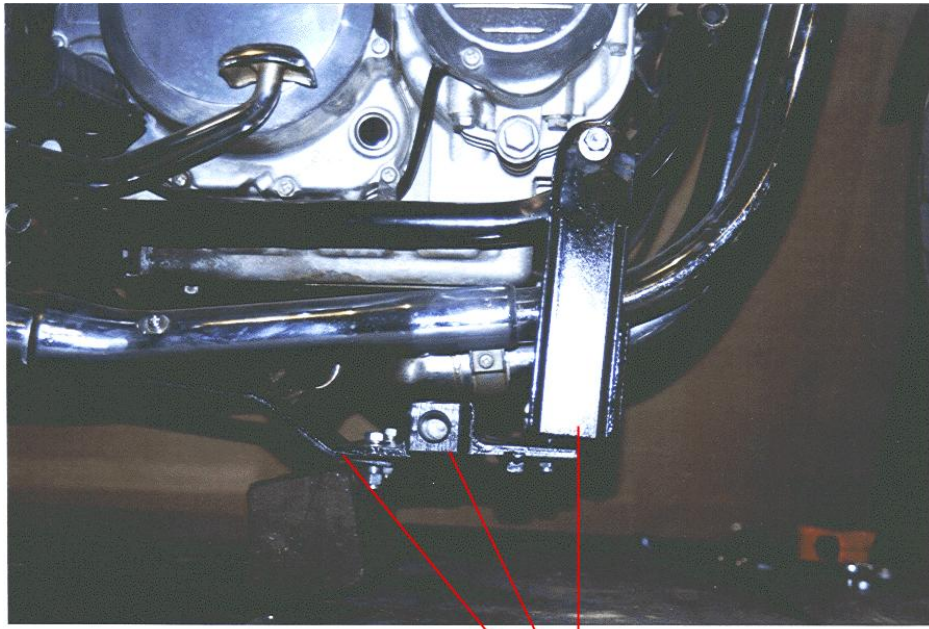
Right Rear Axle Bracket Installed



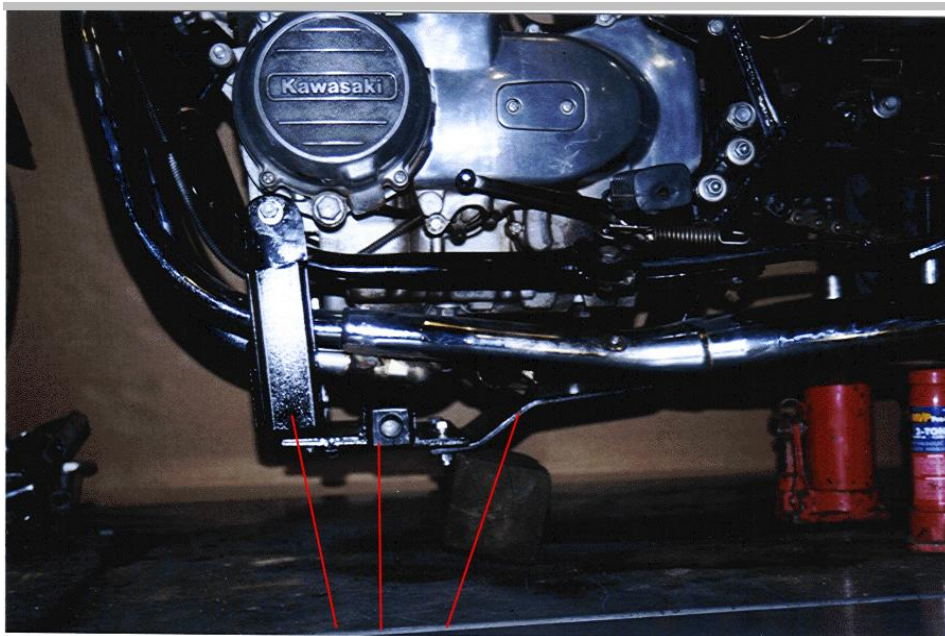
Left Swing Arm
Attachment
and Clamp

Left Rear Axle Bracket Installed

**KAWASAKI KZ 750 LTD
RIGHT AND LEFT VIEW OF
ALL THREE BELLY BRACKETS INSTALLED**



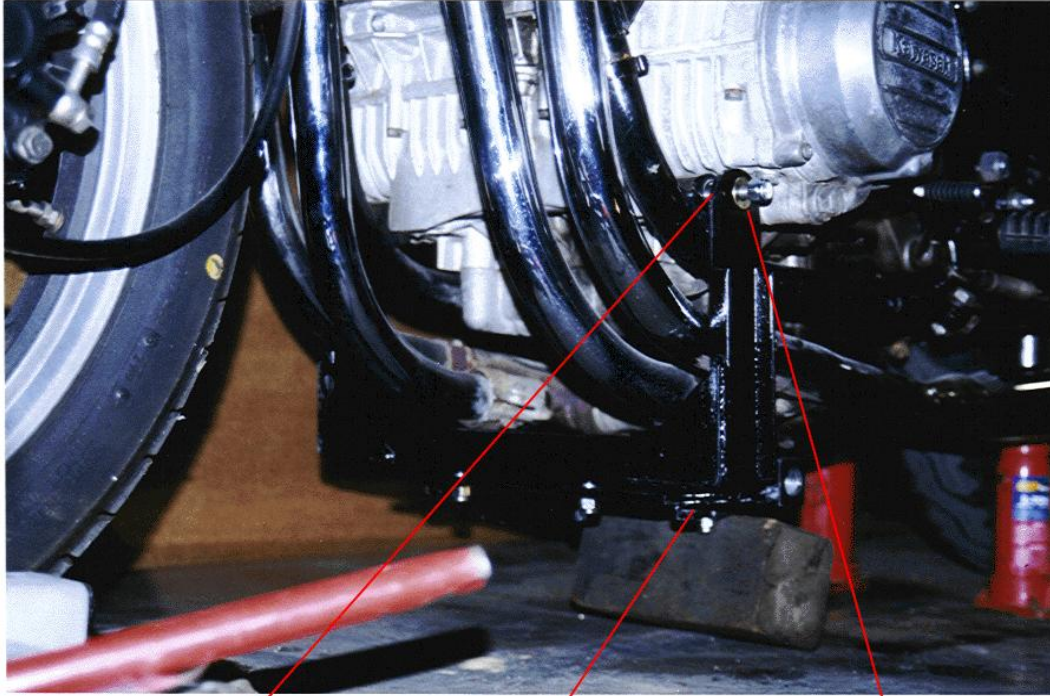
RIGHT SIDE VIEW OF ALL THREE BELLY BRACKETS



LEFT SIDE VIEW OF ALL THREE BELLY BRACKETS

KAWASAKI KZ 750 LTD BELLY BRACKET INSTALLED

FRONT VIEW OF BELLY BRACKET INSTALLED



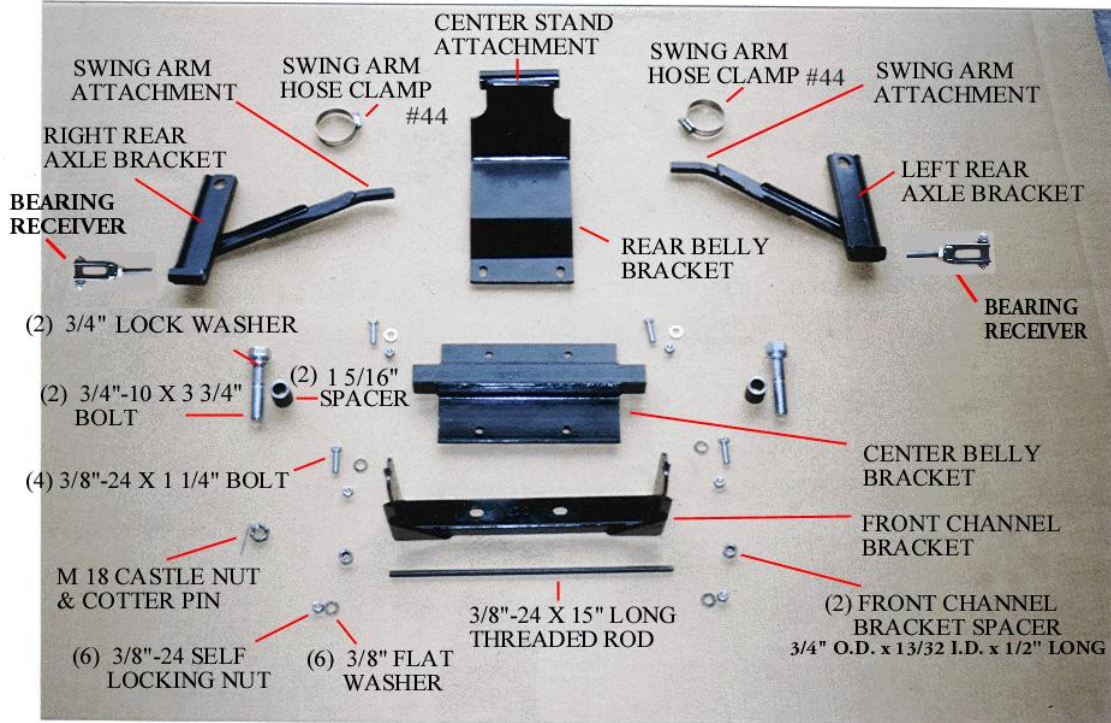
FRONT CHANNEL SPACER

FRONT CHANNEL BRACKET
OF BELLY BRACKET

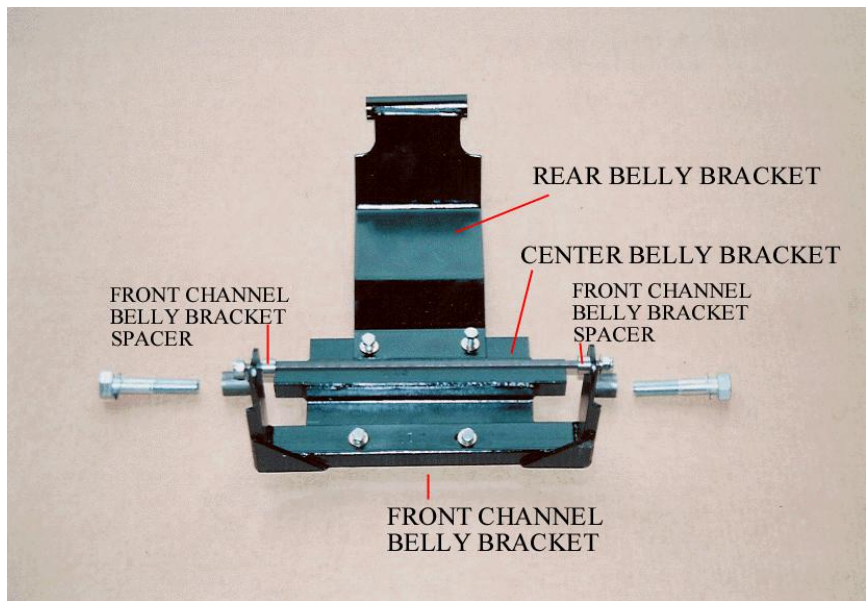
15" FRONT CHANNEL
BRACKET ROD

KAWASAKI KZ 750 LTD

DESCRIPTION OF PARTS AND BELLY BRACKET ASSEMBLED



Two 3/8" washers used as shims– not shown in picture above.
 You may or may not have to use the shims. See note on following page.



KAWASAKI KZ 750 LTD

DESCRIPTION OF PARTS AND BELLY BRACKET ASSEMBLED (cont.)

After installing the mounting hardware and attaching the Voyager frame to the belly bracket you may need shims to make the motorcycle stand straight up and down.

The shims may be used on either the left or the right side depending on which way the motorcycle is leaning. If the motorcycle is leaning to the left put the shims on the left side. If the motorcycle is leaning to the right put the shims on the right side.

**Place shims in-between rear belly bracket
and center belly bracket;
and in-between front channel bracket
and center belly bracket.**



ILLUSTRATION OF SHIM PLACEMENT
BRACKET PICTURED MAY NOT MATCH YOUR BRACKET

SECTION 1

INSTALLATION OF HARDWARE

KAWASAKI KZ 750 LTD

Place motorcycle on a clean flat surface. Make sure to tie down motorcycle on both sides, so that motorcycle can not tip over while installing hardware. Installation is easier if motorcycle is in an upright position.

Disconnect negative cable from battery before beginning installation.

NOTE: The Voyager Convertible Kit was designed for a stock motorcycle from the manufacturer. Any after market products that are on a stock motorcycle may cause the installation process to not be done properly and may or may not need to be removed to be able to install the Voyager Convertible Kit completely. Be aware that your motorcycle and the same make & model as someone else's motorcycle may not have mufflers, body panels, frames, fenders and any other manufacturer parts that are attached to the motorcycle in the exact same place as yours. We at Motorcycle Tour Conversion, Inc. take that into consideration when we manufacture our parts to fit your motorcycle. Once in awhile you may need to modify your motorcycle slightly so that the Motorcycle Tour Conversion, Inc. hardware or suspension fits your motorcycle. Please call Motorcycle Tour Conversion, Inc. if you have any questions about installation with after market products or any modification of motorcycle and/or Motorcycle Tour Conversion, Inc. hardware.

A) BELLY BRACKET

- 1) Remove center kick stand (saving shaft and cotter pin for re-use) (NOTE: Will have to lower exhaust.
- 2) Install rear belly bracket between kick stand brackets using shaft and cotter pin.
- 3) Install front channel bracket as shown in picture using 15" long threaded rod and hardware, make sure spacers are on inside of front mount. (DO NOT tighten at this time.
- 4) Lift rear belly bracket up and bolt center belly bracket to both the rear plate and front channel bracket,

Make sure jack stand nuts are facing down and forward.

- 5) Once center belly bracket is secured, tighten threaded rod hardware holding front channel bracket.

SECTION 1

INSTALLATION OF HARDWARE

KAWASAKI KZ 750 LTD

B) REAR AXLE BRACKETS

- 1) Support bike for removal of rear axle. Support small jacks under swing arms.
- 2) Remove rear axle.
- 3) Slide left rear axle bracket on axle with arm facing forward.
- 4) Replace axle back through rear wheel. Align axle and axle holes with small jacks.
- 5) Slide right rear axle bracket on shaft and tighten up axle using M18 slotted nut.
- 6) Pivot both brackets up and secure swing arm attachment to swing arm of motorcycle with swing arm hose clamps.
- 7) Tighten replacement axle nut and install cotter pin, retighten hose clamps.



MOTORCYCLE TOUR CONVERSION, INC.
1530 TITANIUM DR
OTTAWA, IL. 61350

TOLL FREE: 877-434-7901
FAX: 815-434-8980

KAWASAKI KZ 750 LTD

INSTALLATION MANUAL
US PATENT # 6,739,420

**WARRANTY WILL BE VOID IF INSTALLATION
IS NOT DONE PROPERLY**

**READ THIS MANUAL FULLY BEFORE
BEGINNING INSTALLATION OR DRIVING YOUR
MOTORCYCLE WITH THE VOYAGER KIT ATTACHED**