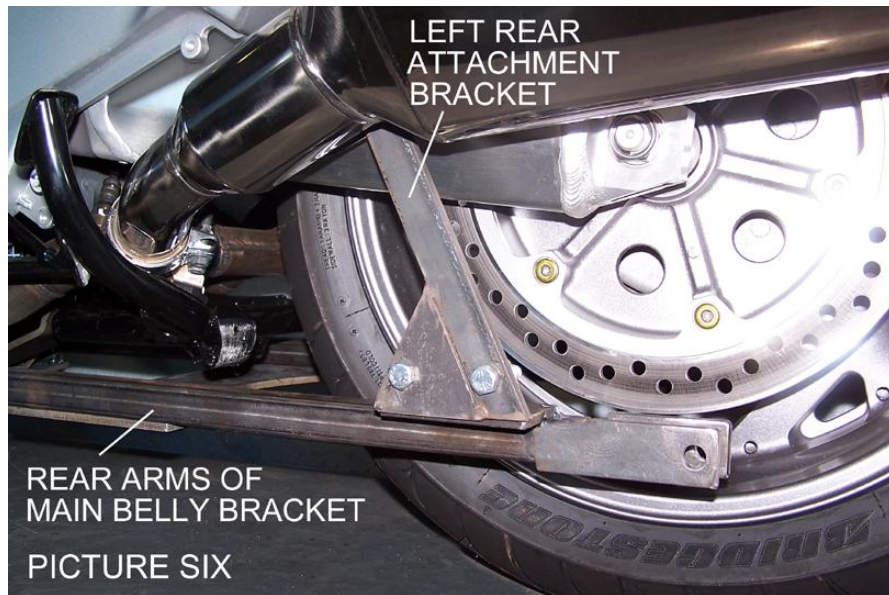
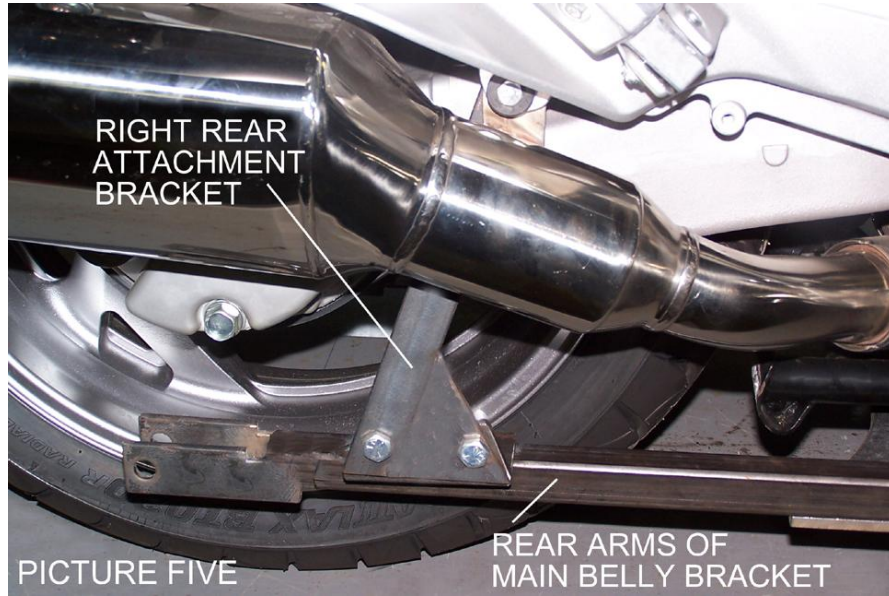
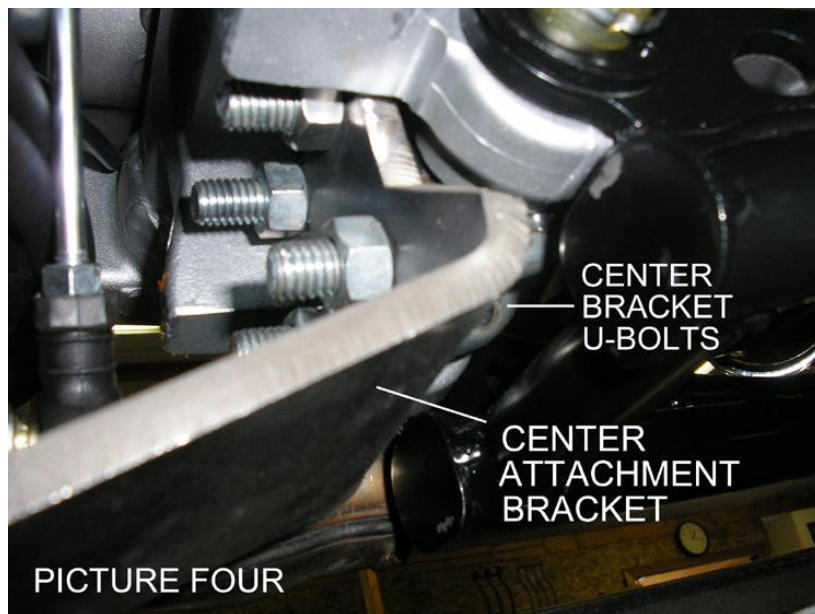
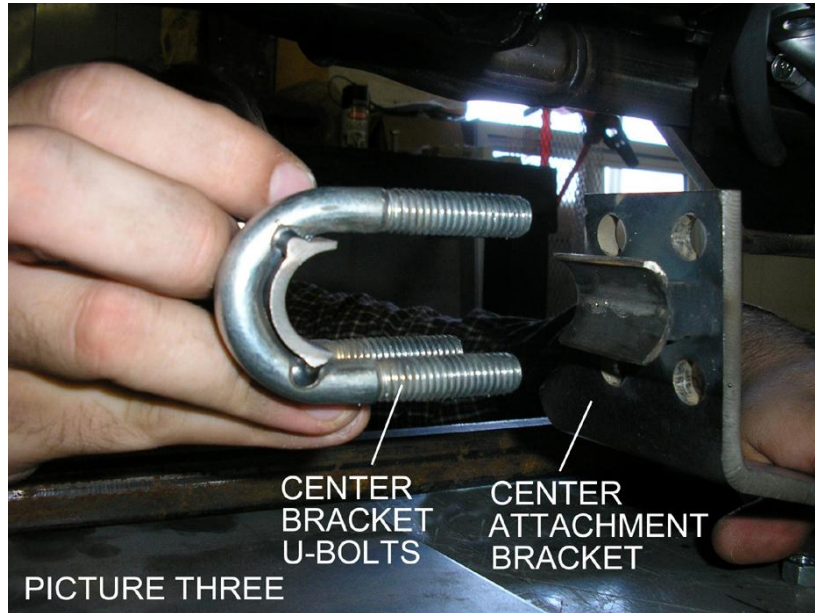


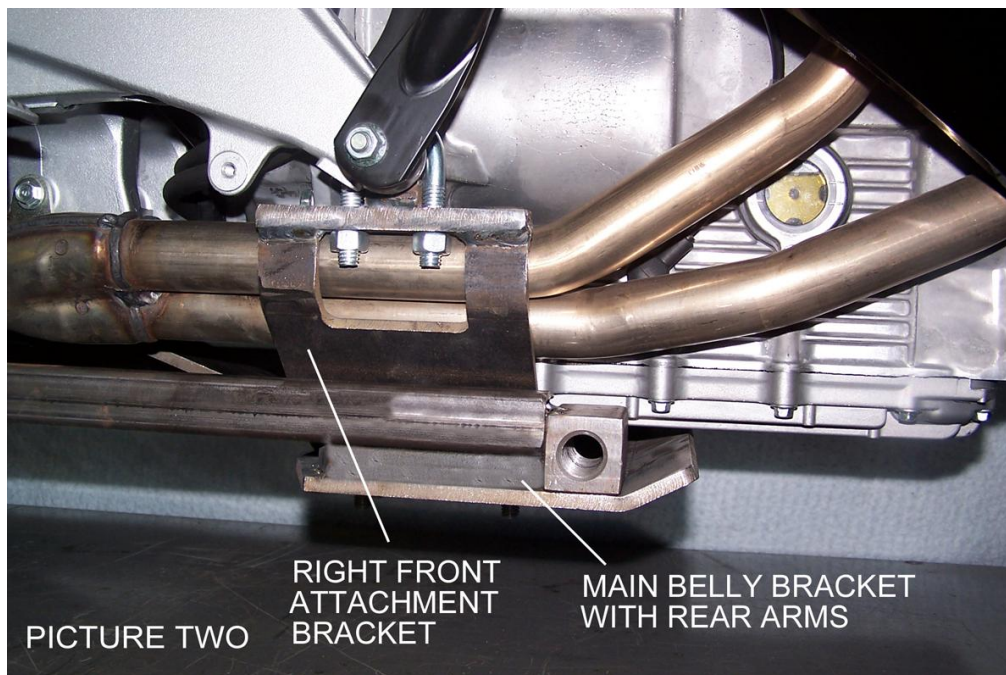
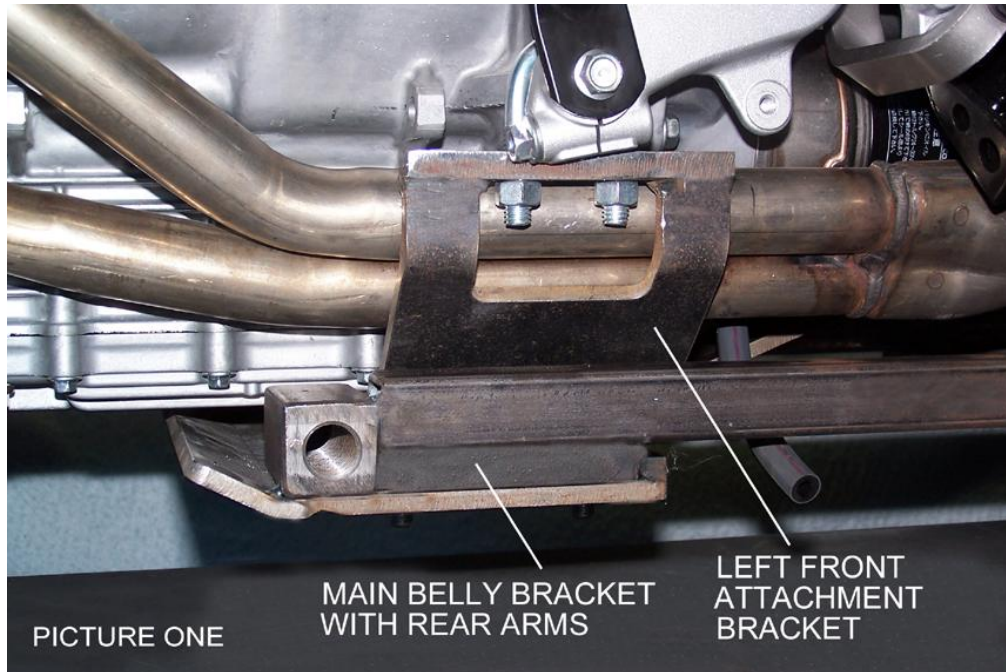
**HONDA ST1300**  
**RIGHT & LEFT REAR ATTACHMENT BRACKETS**  
**INSTALLED (PICTURES FIVE & SIX)**



**HONDA ST1300**  
**CENTER ATTACHMENT BRACKET INSTALLED**  
**(PICTURES THREE & FOUR)**

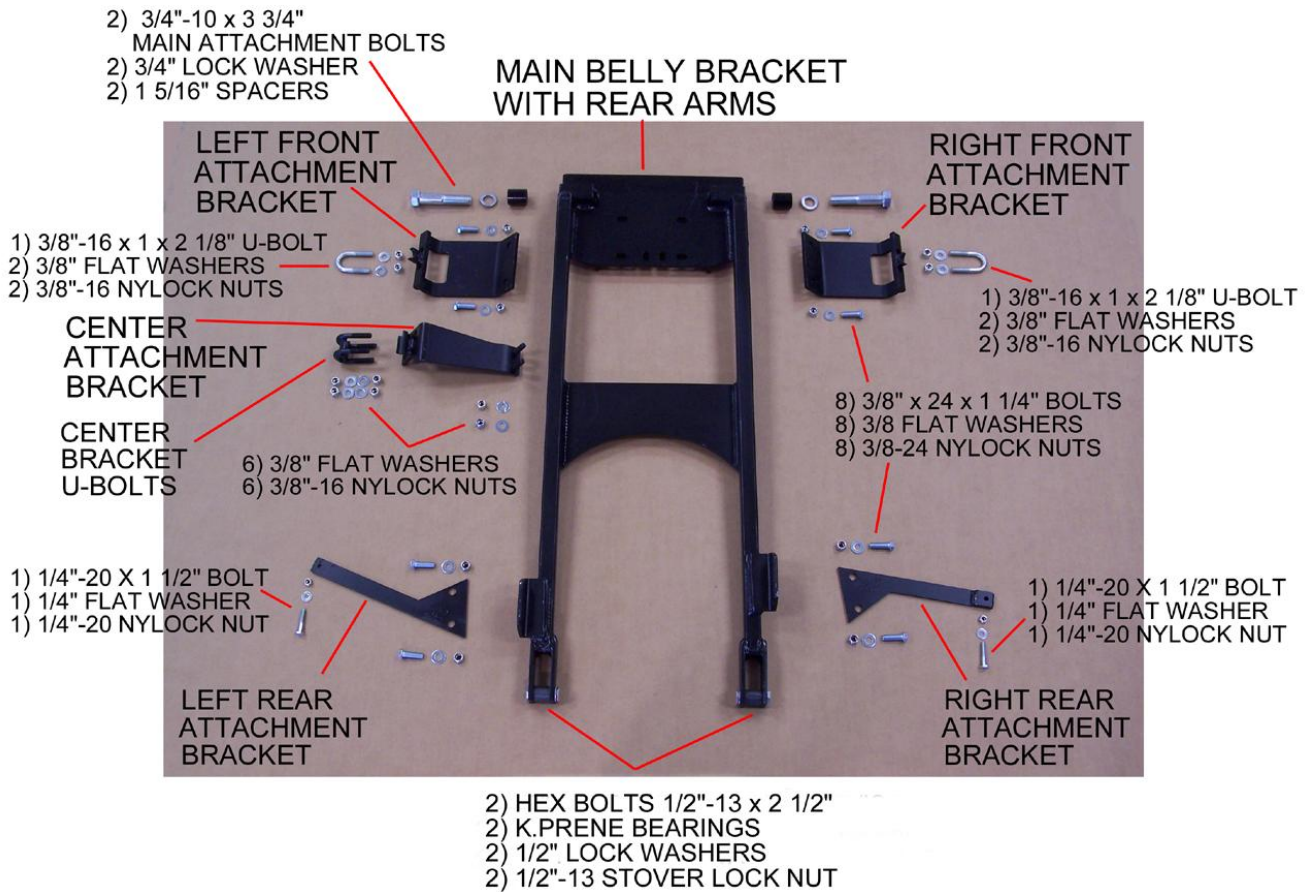


**HONDA ST1300**  
**LEFT & RIGHT FRONT ATTACHMENT BRACKETS**  
**INSTALLED (PICTURES ONE & TWO)**



# HONDA ST1300

## DESCRIPTION OF PARTS



Two 3/8" washers used as shims– not shown in picture above.  
**You may or may not have to use the shims. See note below.**

After installing the mounting hardware and attaching the Voyager frame to the belly bracket you may need shims to make the motorcycle stand straight up and down. The shims may be used on either the left or the right side depending on which way the motorcycle is leaning. If the motorcycle is leaning to the left put the shims on the left side. If the motorcycle is leaning to the right put the shims on the right side.

**Place shims in-between main belly bracket & front attachment bracket.**

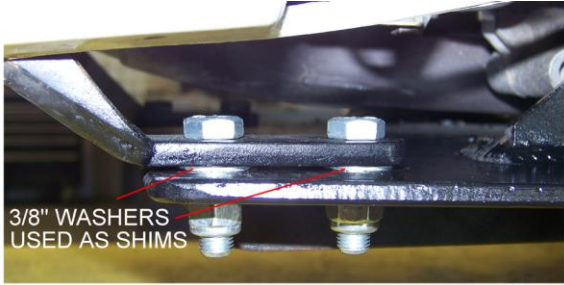


ILLUSTRATION OF SHIM PLACEMENT  
BRACKET PICTURED MAY NOT MATCH YOUR BRACKET

# SECTION 1

## INSTALLATION OF HONDA ST1300

### MOUNTING HARDWARE

Place motorcycle on a clean flat surface. Be sure to tie down motorcycle so it does not tip over during installation. Installation is easier if motorcycle is in an upright position.

**Disconnect negative cable from battery before beginning installation.**

**NOTE:** The Voyager Convertible Kit was designed for a stock motorcycle from the manufacturer. Any after market products that are on a stock motorcycle may cause the installation process to not be done properly and may or may not need to be removed to be able to install the Voyager Convertible Kit completely. Be aware that your motorcycle and the same make & model as someone else's motorcycle may not have mufflers, body panels, frames, fenders and any other manufacturer parts that are attached to the motorcycle in the exact same place as yours. We at Motorcycle Tour Conversion, Inc. take that into consideration when we manufacture our parts to fit your motorcycle. Once in awhile you may need to modify your motorcycle slightly so that the Motorcycle Tour Conversion, Inc. hardware or suspension fits your motorcycle. Please call Motorcycle Tour Conversion, Inc. if you have any questions about installation with after market products or any modification of motorcycle and/or Motorcycle Tour Conversion, Inc. hardware.

#### A) FRONT & CENTER ATTACHMENT BRACKETS

**NOTE: Remove left side and right side lower plastic covers on motorcycle.**

##### LEFT FRONT ATTACHMENT BRACKET

- 1) With lower cover removed on left side follow the aluminum frame of motorcycle toward the front of the motorcycle. At the end of the motorcycle aluminum frame the left front attachment bracket will attach to the engine. On the inside of aluminum frame place 1) 3/8"-16 x 1" x 2 1/8" U-bolt over frame.
- 2) Attach left front attachment bracket to U-bolt with 2) 3/8" flat washers and 2) 3/8"-16 nylock nuts. (Shown in picture one.)

##### RIGHT FRONT ATTACHMENT BRACKET

- 1) With lower cover removed on right side follow the aluminum frame of motorcycle toward the front of the motorcycle. At the end of the motorcycle aluminum frame the right front attachment bracket will attach to the engine. On the inside of aluminum frame place 1) 3/8"-16 x 1" x 2 1/8" U-bolt over frame.

# SECTION 1

## INSTALLATION OF HONDA ST1300 MOUNTING HARDWARE

- 3) Attach right front attachment bracket to U-bolt with 2) 3/8" flat washers and 2) 3/8"-16 nylock nuts. (Shown in picture two.)

### **CENTER ATTACHMENT BRACKET**

- 1) Place center bracket U-bolts, provided with kit, over motorcycle center kickstand attachment rod.
- 2) Install center attachment bracket to center bracket U-bolts with 4) 3/8" flat washers and 4) 3/8"-16 nylock nuts. (Shown in picture three & four)

### **B) REAR ATTACHMENT BRACKETS**

- 1) On each side of motorcycle just behind the passengers foot pegs remove the exhaust bracket bolts, nuts, & washers.
- 2) Install left and right rear attachment brackets to exhaust bracket attachments with 1/4"-20 x 1 1/2" bolts, 1/4" flat washers, and 1/4"-20 nylock nuts. (Shown in picture five and six)

### **C) MAIN BELLY BRACKET WITH REAR ARMS**

- 1) Install main belly bracket with rear arms to left and right front attachment brackets with 4) 3/8"-24 x 1 1/4" bolts, 4) 3/8" flat washers, and 4) 3/8"-24 nylock nuts.
- 2) Install center attachment bracket to main belly bracket with rear arms with 2) 3/8" flat washers, and 2) 3/8"-16 nylock nuts.
- 3) Install left and right rear attachment brackets to main belly bracket with rear arms with 4) 3/8"-24 x 1 1/4" bolts, 4) 3/8" flat washers, and 3/8"-24 nylock nuts.

**Note: Replace lower covers of motorcycle after complete installation of mounting hardware, Voyager frame and suspension and any accessories.**



MOTORCYCLE TOUR CONVERSION, INC.  
1530 TITANIUM DRIVE  
OTTAWA, IL 61350

TOLL FREE: 877-434-7901  
FAX: 815-434-8980

## **HONDA ST1300**

INSTALLATION MANUAL  
US PATENT # 6,739,420

**WARRANTY WILL BE VOID IF INSTALLATION  
IS NOT DONE PROPERLY**

**READ THIS MANUAL FULLY BEFORE  
BEGINNING INSTALLATION OR DRIVING YOUR  
MOTORCYCLE WITH THE VOYAGER KIT ATTACHED**