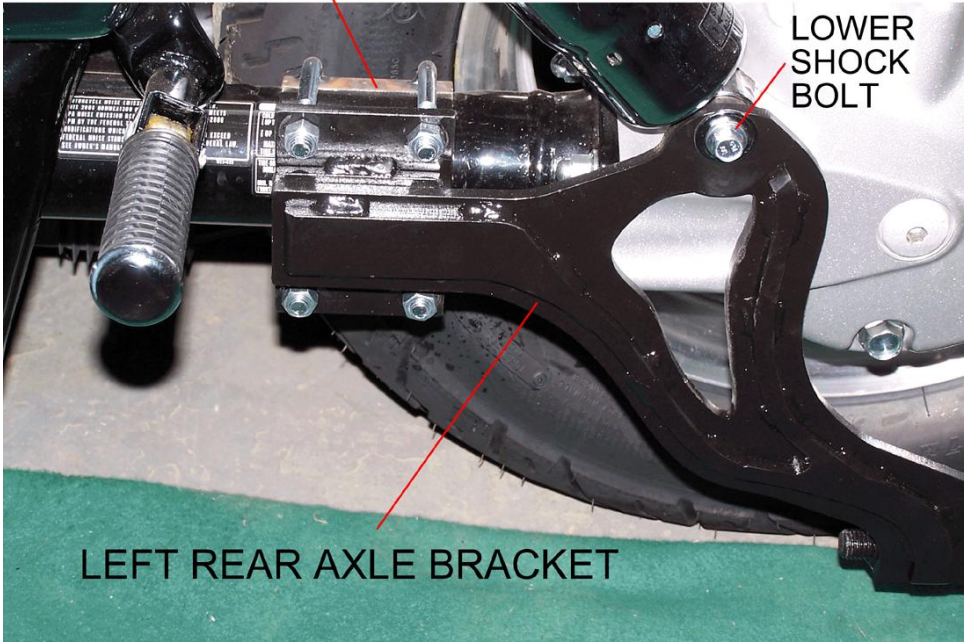


HONDA VTX 1300

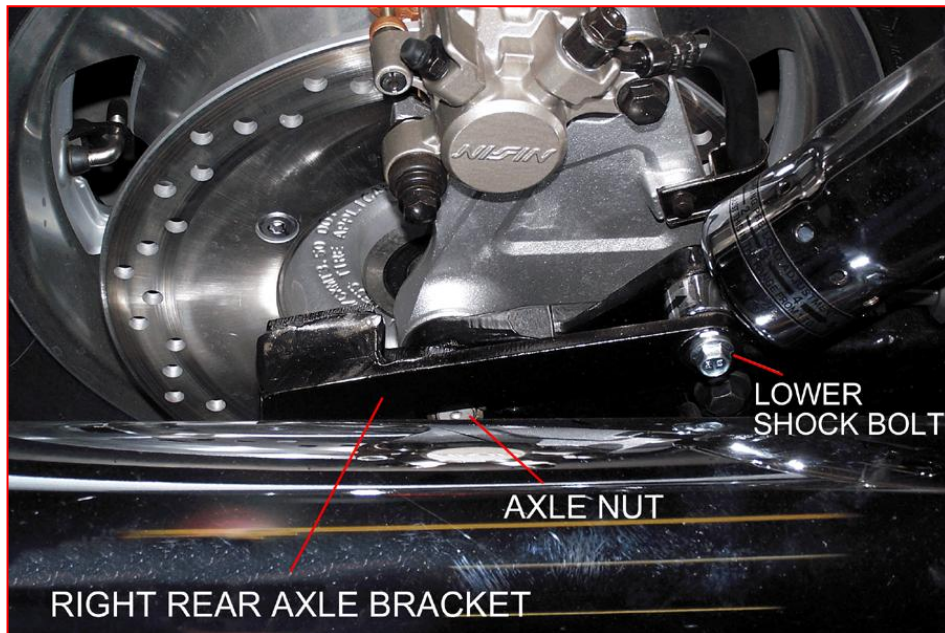
LEFT REAR AXLE BRACKET INSTALLED

LEFT REAR AXLE BRACKET SUPPORT

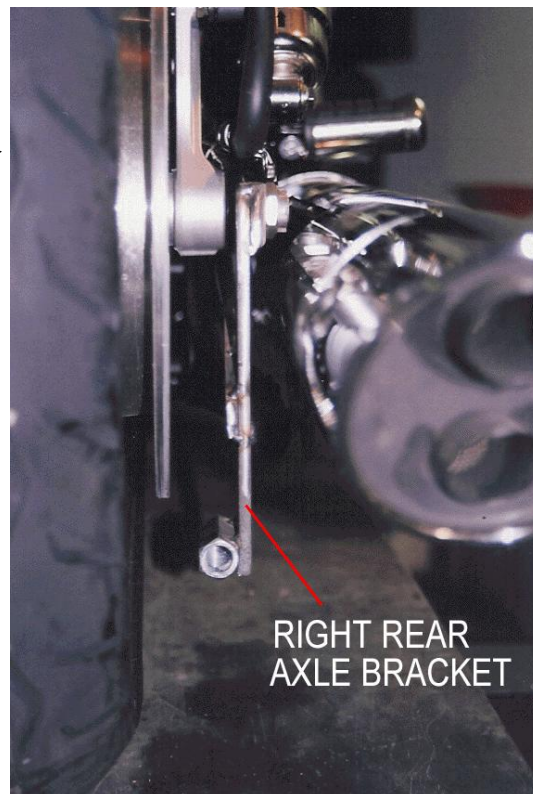


HONDA VTX 1300

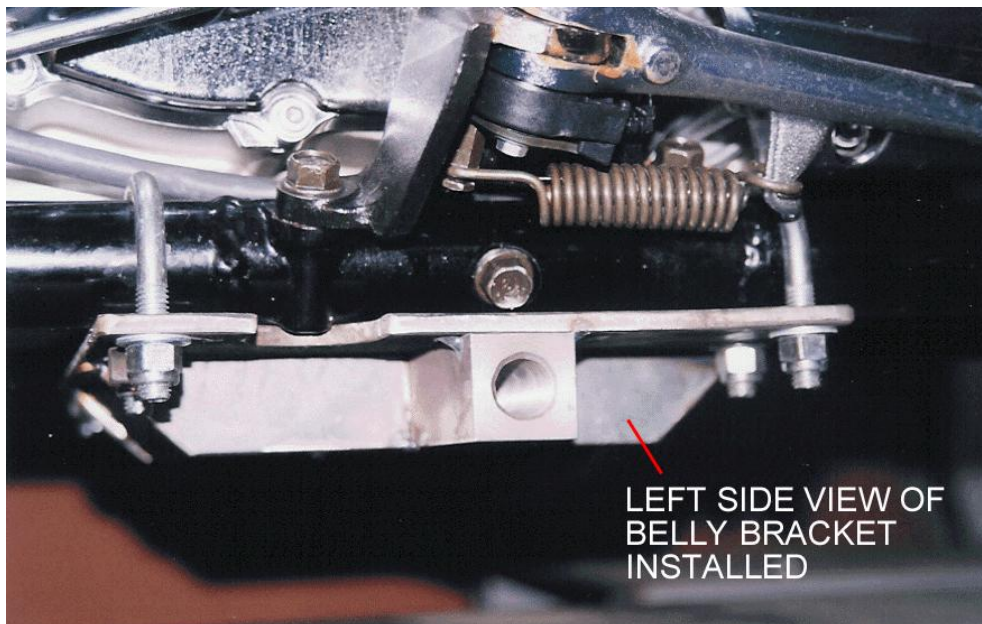
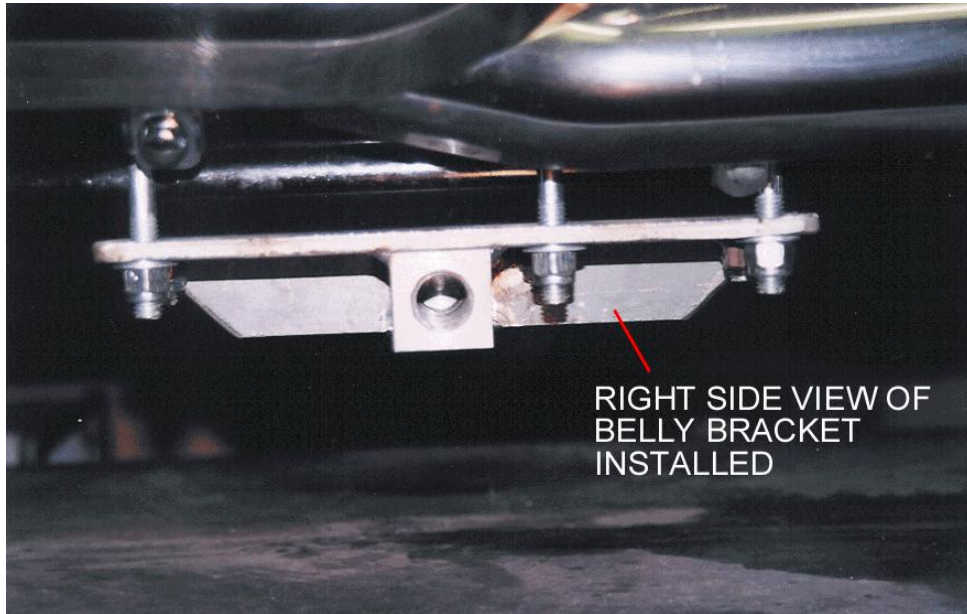
RIGHT REAR AXLE BRACKET INSTALLED



(straight right axle bracket shown) →

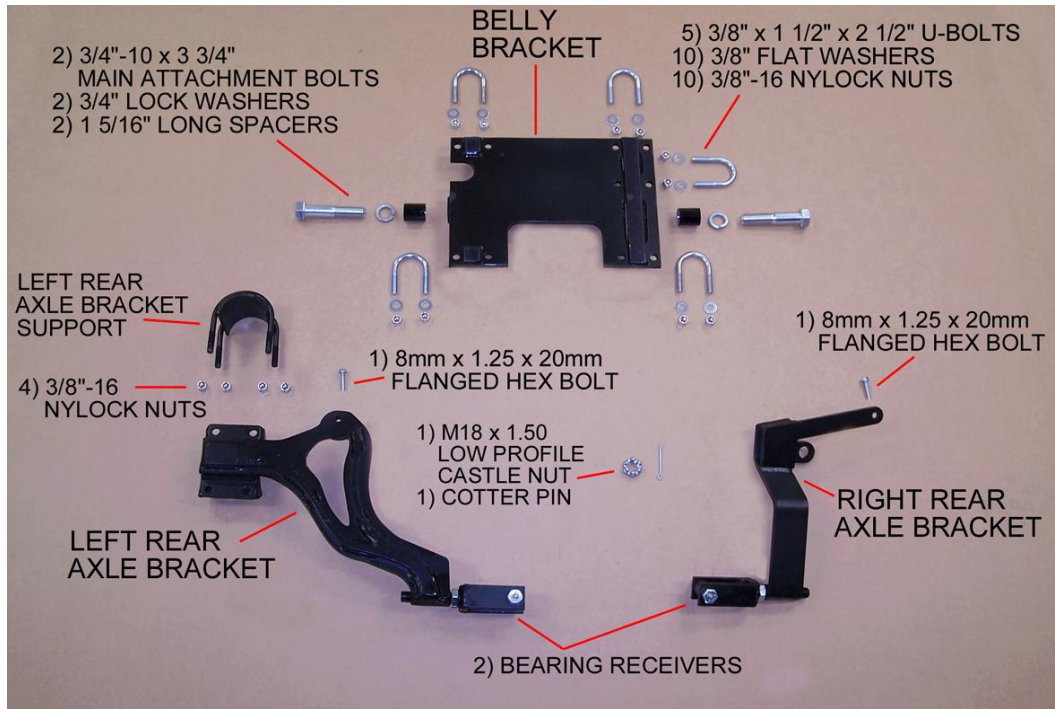


HONDA VTX 1300 BELLY BRACKET INSTALLED



HONDA VTX 1300

DESCRIPTION OF PARTS



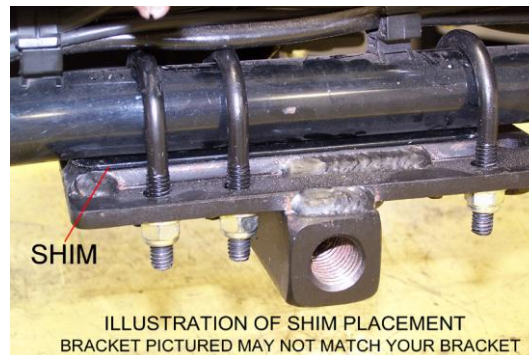
Two 9" shims– not shown in picture above.

You may or may not have to use the shims. See note below.



After installing the mounting hardware and attaching the Voyager frame to the belly bracket you may need shims to make the motorcycle stand straight up and down.

Right side only – install shims in-between belly bracket and motorcycle frame.



SECTION 1

INSTALLATION OF HONDA VTX 1300

MOUNTING HARDWARE

Place motorcycle on a clean flat surface. Be sure to tie down motorcycle so it does not tip over during installation. Installation is easier if motorcycle is in an upright position.

Disconnect negative cable from battery before beginning installation.

NOTE: The Voyager Convertible Kit was designed for a stock motorcycle from the manufacturer. Any after market products that are on a stock motorcycle may cause the installation process to not be done properly and may or may not need to be removed to be able to install the Voyager Convertible Kit completely. Be aware that your motorcycle and the same make & model as someone else's motorcycle may not have mufflers, body panels, frames, fenders and any other manufacturer parts that are attached to the motorcycle in the exact same place as yours. We at Motorcycle Tour Conversion, Inc. take that into consideration when we manufacture our parts to fit your motorcycle. Once in awhile you may need to modify your motorcycle slightly so that the Motorcycle Tour Conversion, Inc. hardware or suspension fits your motorcycle. Please call Motorcycle Tour Conversion, Inc. if you have any questions about installation with after market products or any modification of motorcycle and/or Motorcycle Tour Conversion, Inc. hardware.

A) BELLY BRACKET

- 1) Install (5) U-bolts 3/8" x 1 1/2" x 2 1/2" over frame of motorcycle. Two (2) U-bolts on the left side and three (3) on the right side of frame.
- 2) On the left side of motorcycle frame put one U-bolt in front of side stand and one U-bolt behind side stand. This will set the position of the belly bracket.

B) RIGHT REAR AXLE BRACKET

Note: There are two right rear axle brackets included with this kit. Some bikes need the bracket that is straight and some need the angled bracket.

- 1) Remove axle nut and lower shock bolt. Place right rear axle bracket over the axle bolt and install replacement M18 x 1.50 axle nut. Drill hole through axle bolt and install cotter pin.
- 2) Install replacement 8mm x 1.25 x 20mm flanged hex bolt (this bolt replaces the lower shock bolt removed in step 1) through bracket and into shock.

SECTION 1

INSTALLATION OF HONDA VTX 1300

MOUNTING HARDWARE

C) LEFT REAR AXLE BRACKET

- 1) Remove lower shock bolt.
- 2) Place left rear axle bracket support with U-bolts on inside of drive shaft housing.
- 3) Place left rear axle bracket on outside of drive shaft housing through U-bolts. Install with 4) 3/8"-16 nylock nuts.
- 4) Install replacement 8mm x 1.25 x 20mm flanged hex bolt (this bolt replaces the lower shock bolt removed in step 1) through bracket and into shock.

Note: You will need to have your rear shocks on No. 4 position.



MOTORCYCLE TOUR CONVERSION, INC.
1530 TITANIUM DRIVE
OTTAWA, IL 61350

TOLL FREE: 877-434-7901
FAX: 815-434-8980

HONDA VTX 1300

(revised 1-17-07)

INSTALLATION MANUAL
US PATENT # 6,739,420

**WARRANTY WILL BE VOID IF INSTALLATION
IS NOT DONE PROPERLY**

**READ THIS MANUAL FULLY BEFORE
BEGINNING INSTALLATION OR DRIVING YOUR
MOTORCYCLE WITH THE VOYAGER KIT ATTACHED**